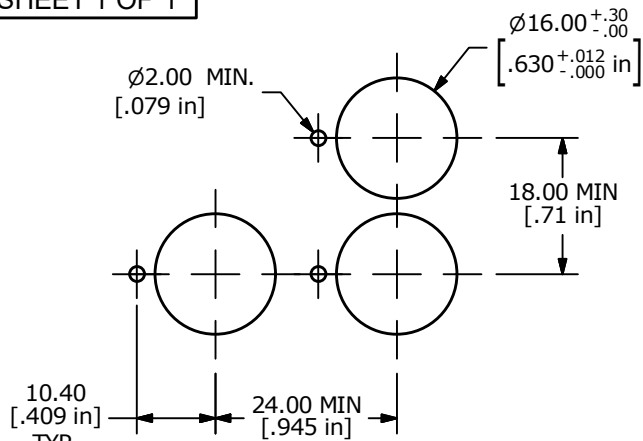
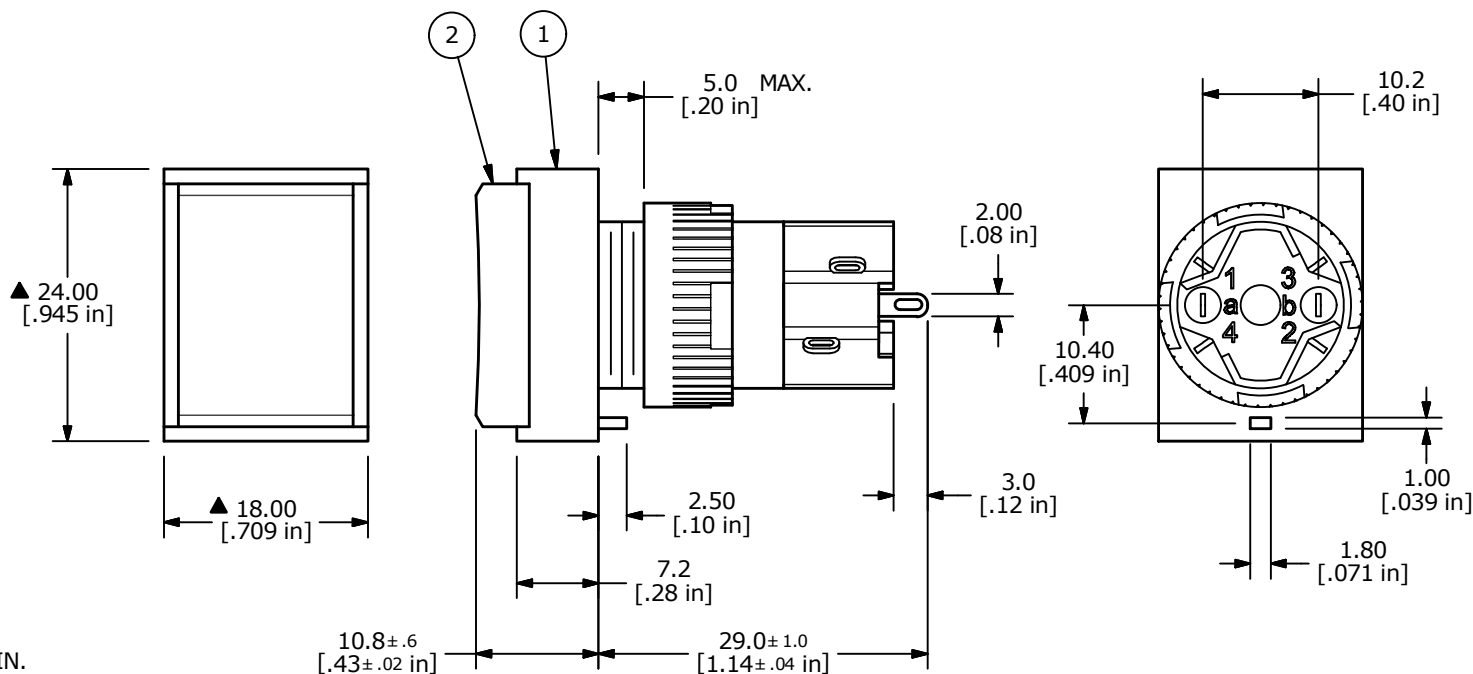
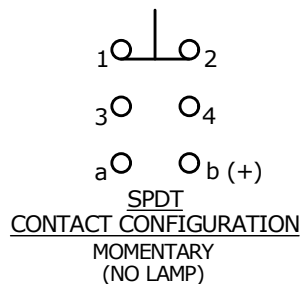


PARTS LIST			
ITEM	QTY	PART NUMBER	DESCRIPTION
1	1	F040004	D16EET11 HOUSING
2	1	F050206	50-002-06 ACTUATOR - WHITE TRANSPARENT RECTANGULAR CONCAVED LENS
-	-	-	NO LAMP



RECOMMENDED PANEL MOUNTING



- NOTE:
1. ALL DIMENSIONS IN MM [INCH]
  2. GENERAL TOLERANCE: X.X = ±0.4  
X.XX = ±0.25
  3. TERMINAL NUMBERS FOR REF ONLY
  4. ELECTRICAL LIFE: 50,000 OPERATIONS
  5. INSULATION RESISTANCE: 1,000 MΩ MIN.
  6. OPERATING TEMP.: -25°C to 70°C (No Lamp)
  - ▲ 7. LAMP VOLTAGE: N/A
  8. ▲ DENOTES CRITICAL PARAMETER.
  9. RATING: 5A @ 250 VAC, 8A @ 125VAC  
6A @ 24 VDC
  10. SEAL RATING: IP40
  - ▲ 11. TRAVEL: 3.0mm FULL - MOMENTARY



A	24038	RELEASE	9/18/19	MW
REV	PCR NO	DESCRIPTION	DATE	BY

TITLE D16OAT110WHT				
SCALE	DATE	DR	DWG	REV
3:2	9/18/2019	MW	XF0926P	A

THE INFORMATION CONTAINED IN THIS DOCUMENT IS PROPRIETARY TO E-SWITCH AND IS NOT TO BE COPIED OR TRANSFERRED